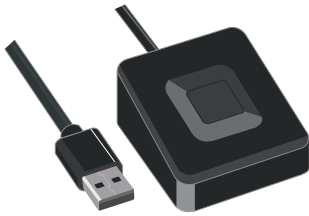


Wired USB Fingerprint Authentication Device Match-On-Chip (MoC)

User Manual



The 「**TE-FPA-CA1**」 is a Wired USB fingerprint authentication device that uses Match-On-Chip (MoC) technology to securely store fingerprint data directly on the device.

This device supports Windows 10 and Windows 11 standard features, as well as Windows Hello and Windows Hello for Business. No additional drivers are required for simple setup.

Initial Verification

Please verify that all items are included before use. If any items are missing, please contact your retailer immediately.

Package Contents

- Fingerprint Authentication Reader 1 unit
- Warranty Card 1 copy

Important Notice: The contents of this manual may be changed without prior notice. For the latest information, please visit our website at: <https://www.tecnosite.co.jp/>

TEC CO.,LTD.

Safety Precautions

Please Read Carefully

To prevent personal injury and property damage, please observe the following precautions. The severity of potential harm or damage from incorrect usage is indicated by the following symbols:

PROHIBITED Actions that must not be performed.

MANDATORY Actions that must be performed.

WARNING

Situations that could result in death or serious injury.

! If you notice unusual sounds, heat, or odors, immediately stop using the device, disconnect the power source, and contact your retailer or our company without delay.

Do not disassemble, modify, or attempt to repair the device yourself. This may result in injury, fire, or electric shock. For internal inspection or repairs, please consult your retailer or our company.

Do not touch or operate the device with wet hands. Do not allow water or other liquids to contact the device. This may cause short circuits, electric shock, or malfunction.

CAUTION

Situations that may result in injury or property damage.

Do not drop the device or subject it to strong impacts. This may cause device damage, malfunction, or injury. If damage occurs, stop using immediately and contact your retailer or our company without delay.

Do not use the device for purposes other than its intended use. This may cause accidents or malfunction.

! In hospitals or aircraft, follow the instructions of the hospital or airline. Electromagnetic waves from this device may affect medical equipment or instruments.

! Regarding data management created by this device, customers are responsible for their own data management. We recommend backing up important data.

1. Main Features

- USB-connected fingerprint authentication reader that prevents unauthorized PC login and data leakage
- High-precision Match-on-Chip technology that matches and encrypts fingerprint information within the device for secure storage
- Windows Hello support (Windows 10/11 standard feature) enables password-free one-touch login
- Windows Hello for Business compatibility allows biometric authentication for cloud service logins
- *Note: Separate passkey configuration may be required
- Register up to 10 fingerprints - supports multiple users for shared usage
- Cable length: approximately 1.5m - easy desktop PC setup and positioning

2. Compatible OS / Compatible Devices

- Compatible OS: Windows® 10・11 (32bit/64bit)
- Compatible devices: PCs with USB-A ports from various manufacturers

Note: May not function in some security software environments

3. About Windows Hello Compatibility

- This product utilizes Windows Hello standard features
- Please verify that Windows Hello is enabled on your PC before use
- For initial use, please perform driver installation (automatic installation)

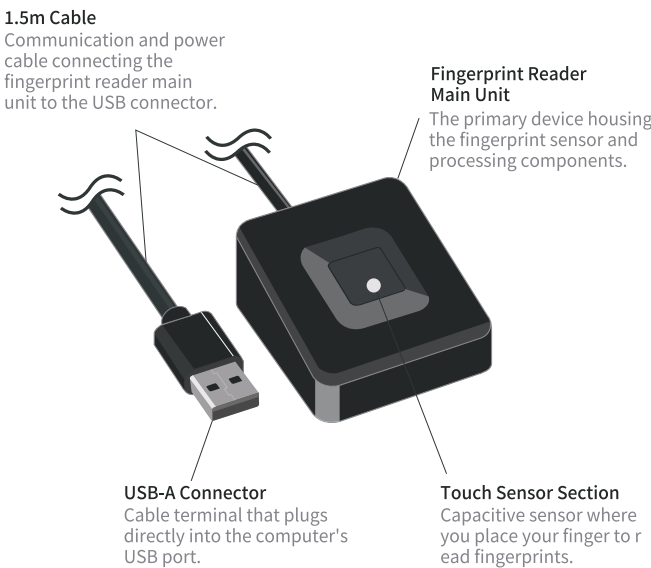
4. Specifications

Connection Interface	USB 2.0 / USB 3.0
Compatible OS	Windows 10 / Windows 11
Fingerprint Sensor	Capacitive touch sensor (360° authentication support)
Recognition Speed	Approximately 50 ms
Authentication Accuracy	False acceptance rate: 0.001% or less, False rejection rate: 1.7% or less
Data Storage Method	Internal MoC (Match-on-Chip) method
Maximum Fingerprints	10 fingerprints (10 fingers)
Cable Length	1.5m
Device Dimensions	Approximately 4.1 × 3.66 × 2.04 cm
Product Weight	Approximately 55.2 g

Important Notes:

- ※ Specifications may be changed without prior notice. For the latest information, please check our company website (<https://www.tecnosite.co.jp>).
- ※ This product stores fingerprint data internally within the device, reducing the risk of data leakage from external unauthorized access.
- ※ While fingerprints can be read from any 360° angle, authentication accuracy may vary depending on the authentication environment and individual differences.
- ※ A maximum of 10 fingerprints can be registered per device.
- ※ Compatible OS and interface specifications are as of product release.
- ※ This product does not guarantee operation with all connected devices.
- ※ Cannot be used on PCs with built-in fingerprint authentication functions.
- ※ This product does not completely prevent external intrusion, spoofing, or data leakage.

5. Component Names and Functions



6. Setup Instruction

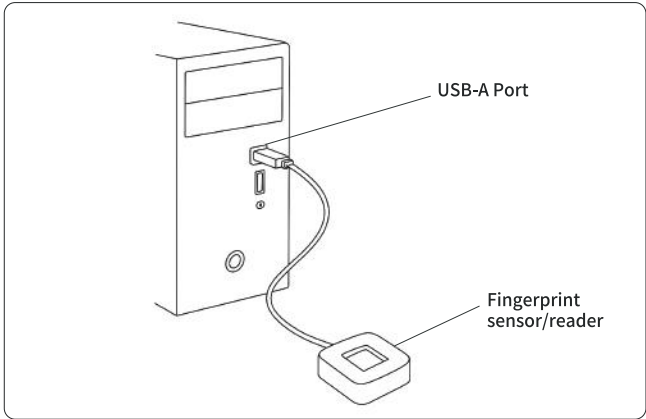
Windows 11/10



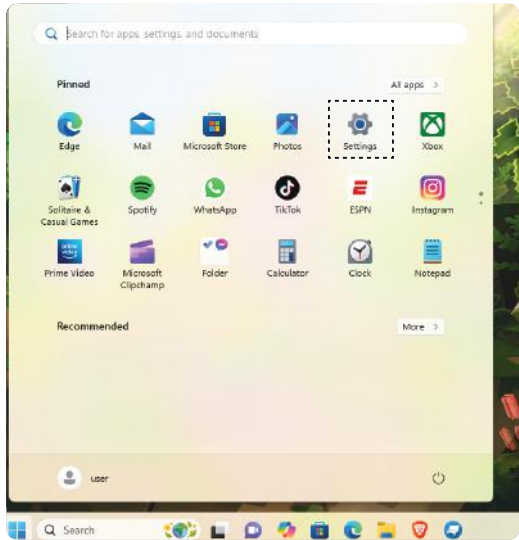
- Important: Before beginning the initial setup, please register a password or PIN for your Windows account.
- When prompted to sign in, please enter the password (or PIN) for your registered Windows account.

Register Fingerprint

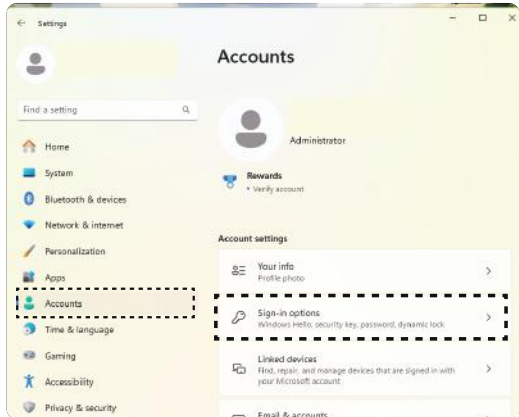
1. Simply plug the device into a USB port, and the drivers will be installed automatically.



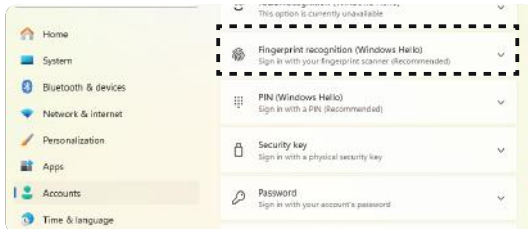
2. Open the Start menu and click on "Settings."



3. From the "Accounts" menu, select "Sign-in options."



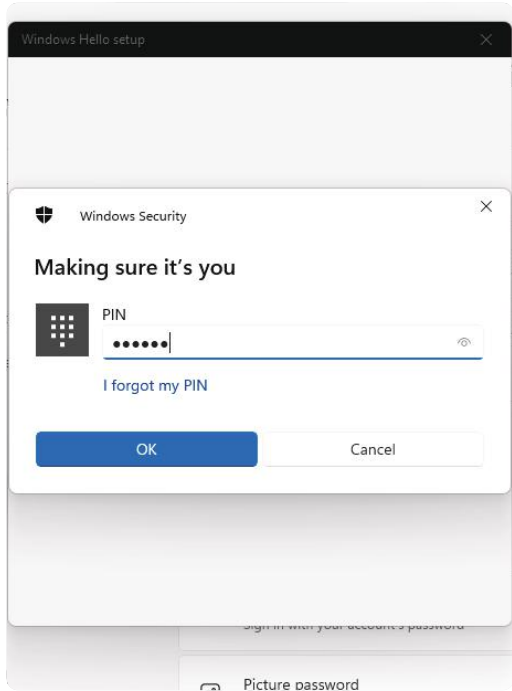
4. As your sign-in method, select "Windows Hello Fingerprint."



5. When the Windows Hello welcome screen appears, click the "Get started" button.



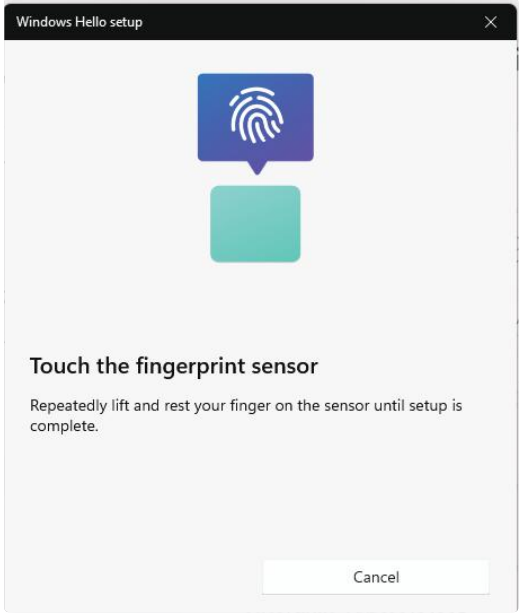
6. Follow the on-screen instructions and enter your PIN code.



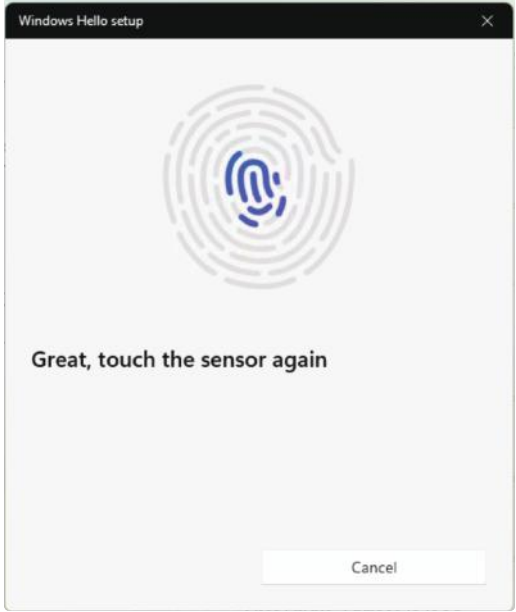
※ **Note:** When deleting fingerprints registered to this device, deletion will only be possible on the PC where they were registered.

6. Setup Procedure (Continued)

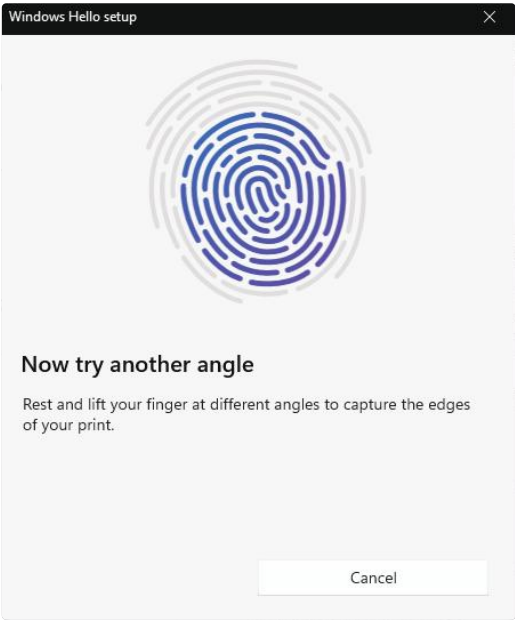
7. Fingerprint registration will begin. When "Touch the fingerprint sensor" is displayed, lightly touch the sensor area with the finger you want to register.



8. When "Great, touch the sensor again" is displayed, follow the on-screen instructions and continue touching the sensor repeatedly with the same finger.



9. When "Now try another angle" is displayed, click "Next" and touch the fingerprint sensor while changing the angle of your finger. After repeating the touches several times, fingerprint registration will be complete.



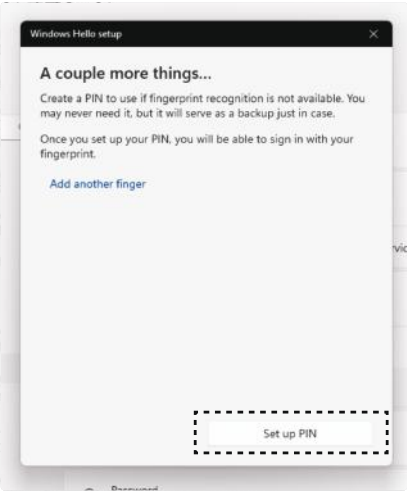
If You Already Have a PIN Created

10. To register additional fingers, click "Add another finger" and register the fingerprint of the finger you want to add. When registration is complete, click "Close" to finish.



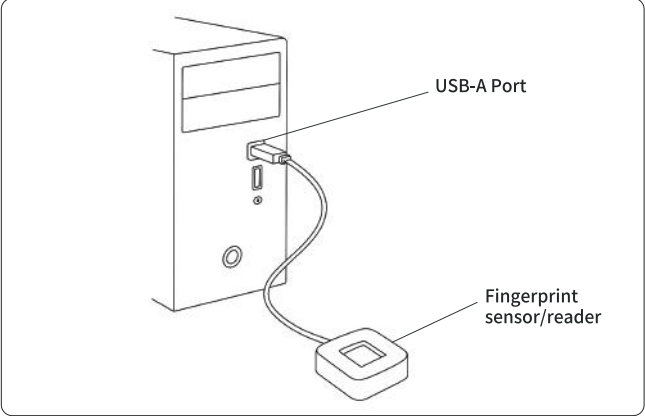
If You Have Not Created a PIN Yet

10. When fingerprint recognition is complete, "A couple more things..." will be displayed. To register additional fingers, click "Add another finger." Once you have finished registering the necessary fingers, click "Set up PIN" to create your PIN code.

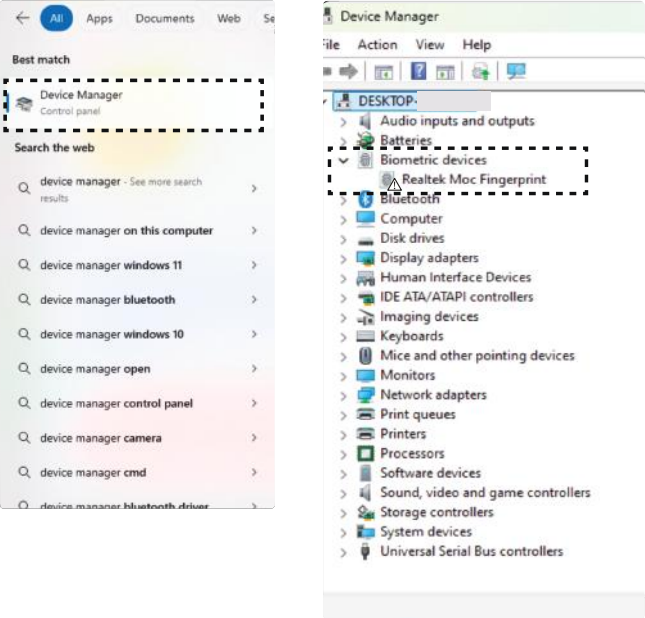


7. If Problems Occur During Setup

1. With your computer connected to the network, please connect this device to your computer's USB port.

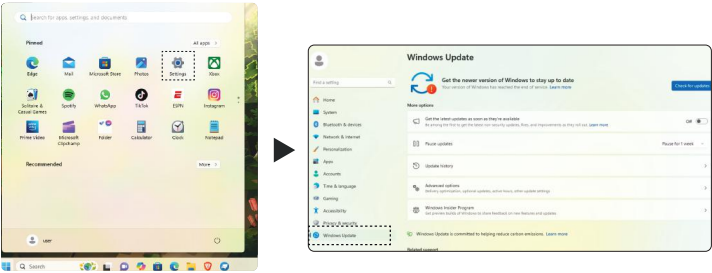


2. Open "Device Manager" and check the "Other devices" section.



! If a device shows an exclamation mark (warning mark), please try the following steps first.

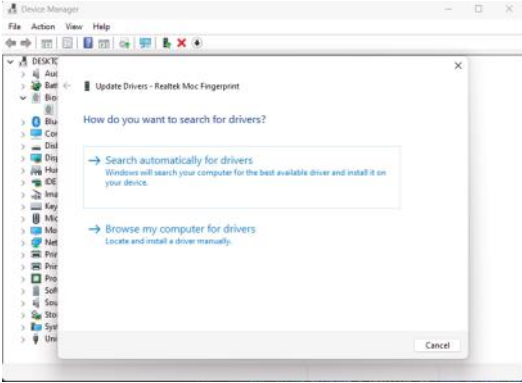
3. From "Start," go to "Settings," then select "Windows Update."



4. Click "Check for updates."



5. Click "Search automatically for drivers." The most appropriate driver for your computer will be automatically searched for and installed.



This completes the installation.

To Verify the Installation Was Completed Successfully

Open the Start menu and search for "Device Manager." When the Device Manager window opens, if the corresponding device does not show a warning icon (exclamation mark), the installation has been completed successfully.

